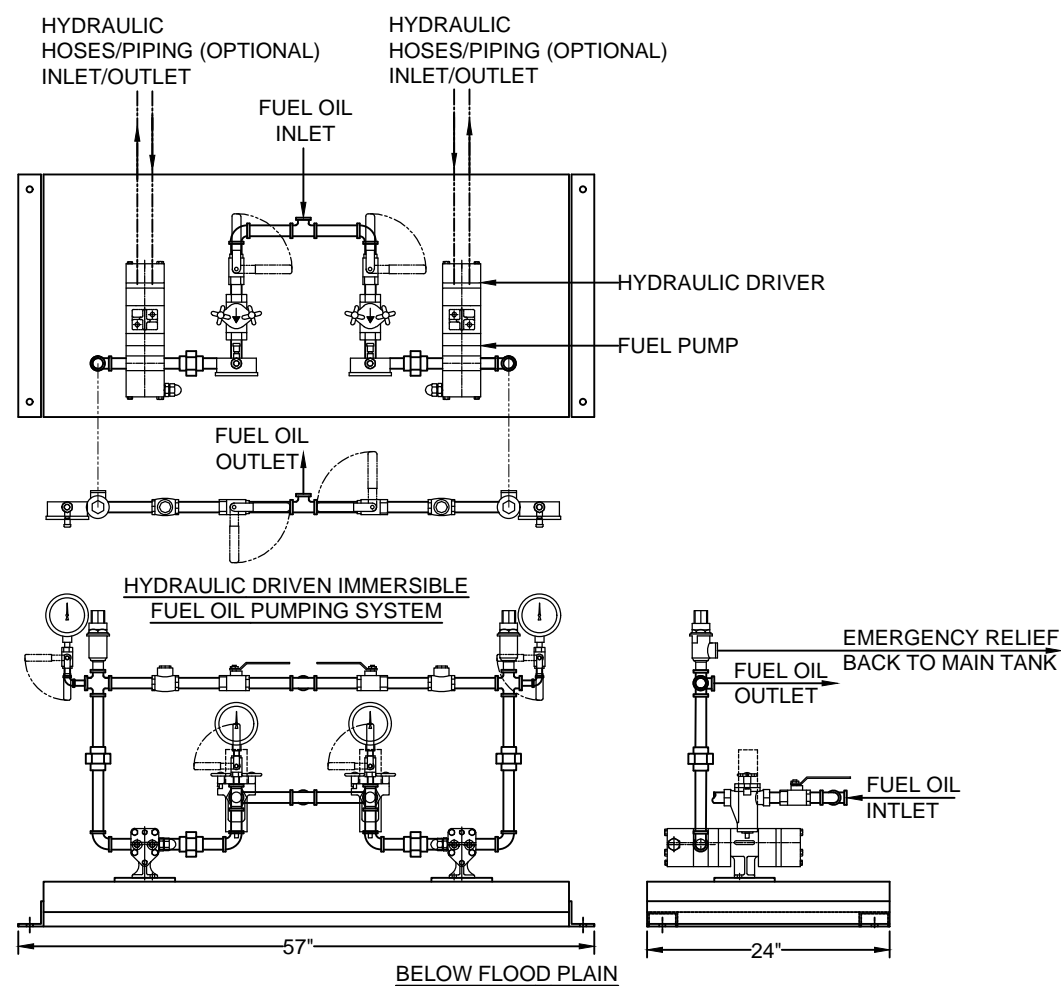
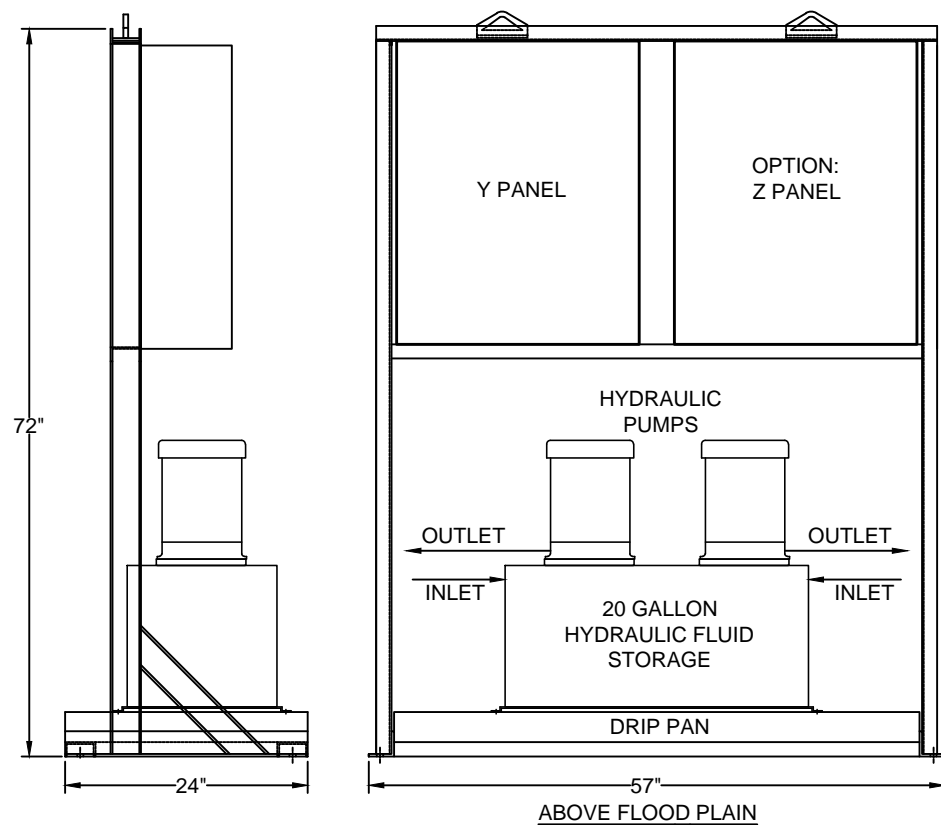


MODEL			OIL PUMPSET				HYDRAULIC POWER UNIT			
50 PSIG	100 PSIG	150 PSIG	OIL INLET & OUTLET	HYDRAULIC DRIVER	DRIVER INLET & OUTLET	RPM	HYDRAULIC FLOWRATE	HYDRAULIC PRESSURE	HYDRAULIC MOTOR HP	VOLTAGE; PHASE
TG-0040-050-ZD	TG-0035-100-ZD	TG-0030-150-ZD	1/2"	518	SAE 9/16-18	1800	.7 GPM	1450 PSIG	1/2	120-208-230/460; 1&3P
TG-0080-050-ZD	TG-0077-100-ZD	TG-0075-150-ZD	1/2"	518	SAE 9/16-18	1800	.7 GPM	1450 PSIG	1/2	120-208-230/460; 1&3P
TG-0155-050-ZD	TG-0150-100-ZD		1/2"	518	SAE 9/16-18	1800	.7 GPM	1450 PSIG	1/2	120-208-230/460; 1&3P
TG-0215-050-ZD	TG-0205-100-ZD		1/2"	518	SAE 9/16-18	1800	.7 GPM	1450 PSIG	1/2	120-208-230/460; 1&3P
		TG-0145-150-ZD	1/2"	525	SAE 9/16-18	1800	1 GPM	975 PSIG	1/2	120-208-230/460; 1&3P
		TG-0200-150-ZD	1/2"	525	SAE 9/16-18	1800	1 GPM	975 PSIG	1/2	120-208-230/460; 1&3P



CRITICAL FUEL SYSTEMS IMMERSIBLE PUMPING SYSTEMS INCLUDE BOTH HIGH VOLTAGE STARTERS AND CONTROLS ALONG WITH PLC/HMI BASED CONTROLS. THE SYSTEMS COME WITH SIMPLEX OR DUPLEX PUMP SETS ALONG WITH OTHER CUSTOMER DESIGNS. EACH PUMP SET WILL INCLUDE A HYDRAULIC POWER UNIT (HPU) AND A HYDRAULIC PUMP - FUEL OIL PUMP (HP-FOP). THE HPU WILL BE LOCATED ABOVE THE FLOOD PLAIN WITH THE HP-FOP LOCATED BELOW THE FLOOD PLAIN. THE HPU WILL BE COMPLETELY WIRED WITH FIELD WIRING TO THE HP-FOP REQUIRED. HYDRAULIC PIPING IS REQUIRED BETWEEN THESE TWO UNITS. CONSULT CFS FOR SIZING ASSISTANCE.

OPTIONS

1. RUPTURE BASIN LEAK SWITCH (OIL PUMPSET AND HYDRAULIC POWER UNIT)
2. FLOOR FLOODED SENSING SWITCH
3. FLOW SWITCH
4. 2.5" OR 4" PRESSURE GAUGES
5. DP SWITCH / INDICATOR ACROSS STRAINER
6. FLEX HOSE CONNECTIONS (LOOSE)
7. VIBRATION ISOLATION
8. HYDRAULIC INTERCONNECTING HOSES AND ADAPTERS

THIS DRAWING IS PROVIDED FOR GENERAL LAYOUT USE AND APPROXIMATE DIMENSIONS ONLY. SOME OF THE EQUIPMENT SHOWN IS OPTIONAL AND MAY NOT APPLY TO YOUR PROJECT. PROJECT SPECIFIC, DETAILED DRAWINGS ARE PROVIDED AFTER RECEIPT OF AN ORDER.

SCALE: 19:1



GENERAL NOTES

1. THIS DRAWING IS THE PROPERTY OF CRITICAL FUEL SYSTEMS, A DIVISION OF BFS INDUSTRIES, LLC, AND IS SUBJECT TO CHANGE WITHOUT NOTICE. THE INFORMATION CONTAINED HEREIN IS TO BE USED ONLY FOR THE JOB INDICATED, AND IS NOT TO BE COPIED, TRANSMITTED OR USED IN ANY WAY DETRIMENTAL TO THE COMPANY
2. ALL PIPING AND WIRING IS FACTORY INSPECTED FOR TIGHTNESS. HANDLING DURING SHIPMENT MAY LOOSEN AND MISALIGN COMPONENTS. THE FACTORY ASSUMES NO RESPONSIBILITY FOR LEAKS, MISALIGNMENT OR ANY OTHER CONSEQUENTIAL LIABILITY ARISING FROM SITUATIONS BEYOND ITS CONTROL. IT IS STRONGLY RECOMMENDED THAT ALL JOINTS, UNIONS AND COUPLINGS BE CHECKED FOR TIGHTNESS AND ALIGNMENT AFTER INSTALLATION TO ENSURE PROPER PERFORMANCE.

6		
5		
4		
3		
2		
1		

REVISIONS:

Critical Fuel Systems
A division of BFS Industries, LLC

DRAWN: SL APPROVED:

SO #

JOB		
CUSTOMER		
MODEL		
TRUE GUARD (PATENT PENDING) IMMERSIBLE PUMPING SYSTEMS		
DATE 4/14/2020	DRAWING NO. TRUEGUARD-(1)	REV. 0