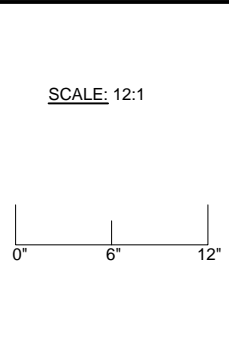
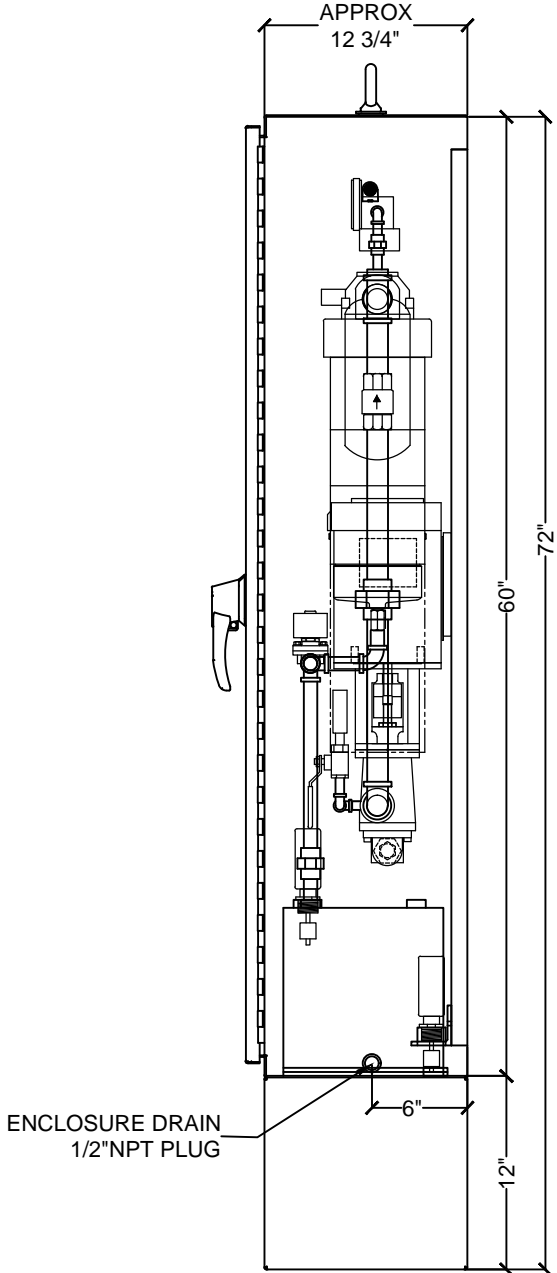
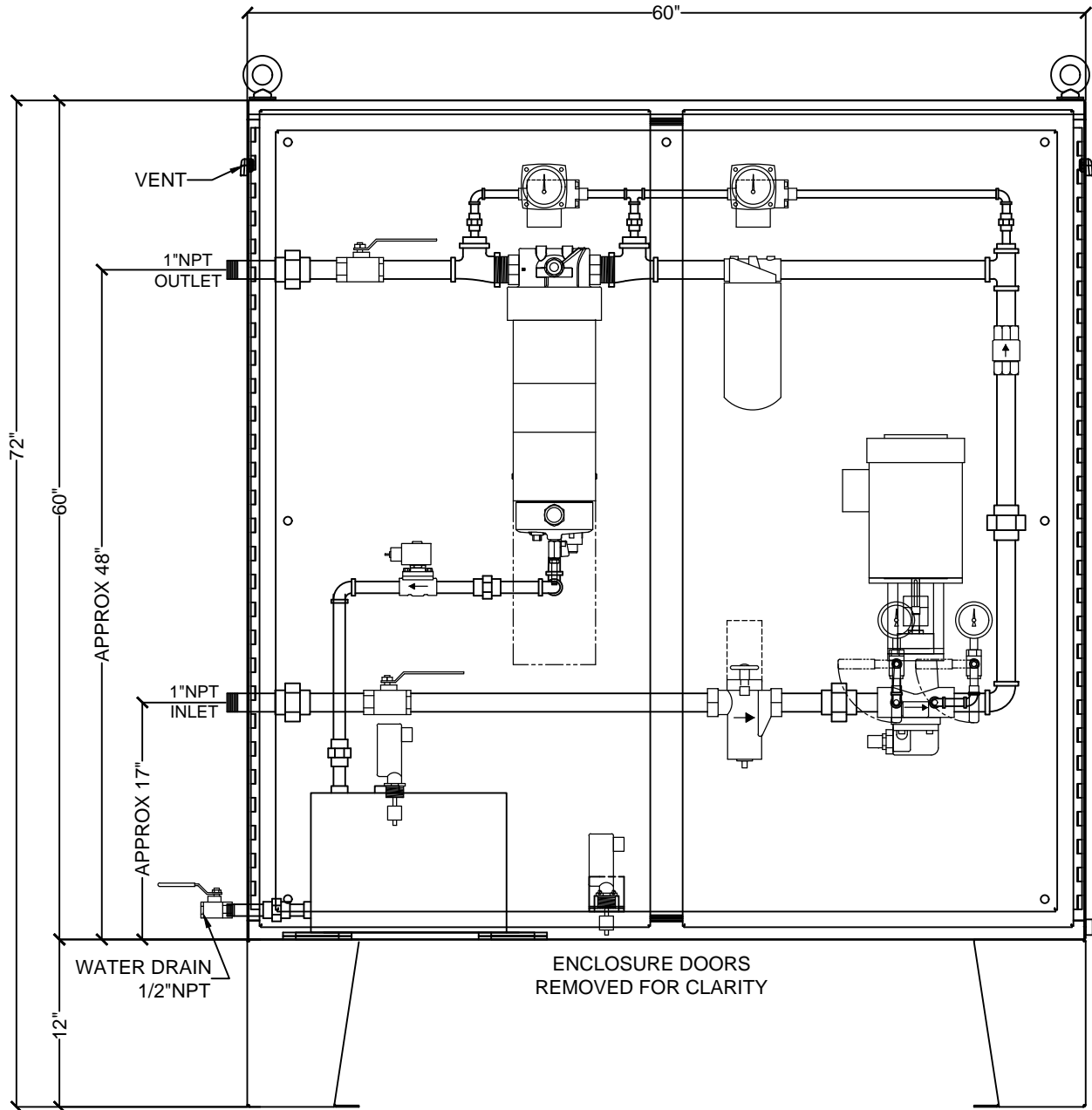


FMEZ0380 FUEL MAINTENANCE SYSTEM

- With GHCF COALESCER & DP SWITCH
- With SIMPLEX STRAINER & DP SWITCH
- WITH PREFILTER & DP SWITCH
- With AUTOWATER
- With LEAK SWITCH
- NEMA 4 ENCLOSURE 60"X60"X12"

THIS DRAWING IS PROVIDED FOR GENERAL LAYOUT USE AND APPROXIMATE DIMENSIONS ONLY. SOME OF THE EQUIPMENT SHOWN IS OPTIONAL AND MAY NOT APPLY TO YOUR PROJECT. PROJECT SPECIFIC, DETAILED DRAWINGS ARE PROVIDED AFTER RECEIPT OF AN ORDER



GENERAL NOTES

- THIS DRAWING IS THE PROPERTY OF CRITICAL FUEL SYSTEMS, A DIVISION OF BFS INDUSTRIES, LLC, AND IS SUBJECT TO CHANGE WITHOUT NOTICE. THE INFORMATION CONTAINED HEREIN IS TO BE USED ONLY FOR THE JOB INDICATED, AND IS NOT TO BE COPIED, TRANSMITTED OR USED IN ANY WAY DETRIMENTAL TO THE COMPANY
- ALL PIPING AND WIRING IS FACTORY INSPECTED FOR TIGHTNESS. HANDLING DURING SHIPMENT MAY LOOSEN AND MISALIGN COMPONENTS. THE FACTORY ASSUMES NO RESPONSIBILITY FOR LEAKS, MISALIGNMENT OR ANY OTHER CONSEQUENTIAL LIABILITY ARISING FROM SITUATIONS BEYOND ITS CONTROL. IT IS STRONGLY RECOMMENDED THAT ALL JOINTS, UNIONS AND COUPLINGS BE CHECKED FOR TIGHTNESS AND ALIGNMENT AFTER INSTALLATION TO ENSURE PROPER PERFORMANCE.

SPECIAL NOTES

- ALL PIPING IS SCH. 40 ERW THREADED
- ALL FITTINGS ARE 150# BMI
- ALL UNIONS ARE 3000# FORGED STEEL
- ENCLOSURE PENETRATION NIPPLES ARE SCH 80S

△6	-	-	-
△5	-	-	-
△4	-	-	-
△3	-	-	-
△2	-	-	-
△1	-	-	-

REVISIONS:

Critical Fuel Systems
A division of BFS Industries, LLC

DRAWN: SL APPROVED: [Signature]

SO # -

JOB -		
CUSTOMER -		
MODEL: FMEZ0380 FUEL MAINTENANCE SYSTEM		
DATE: 6/6/2019	DRAWING NO.: FMEZ0380-D	REV.: 0