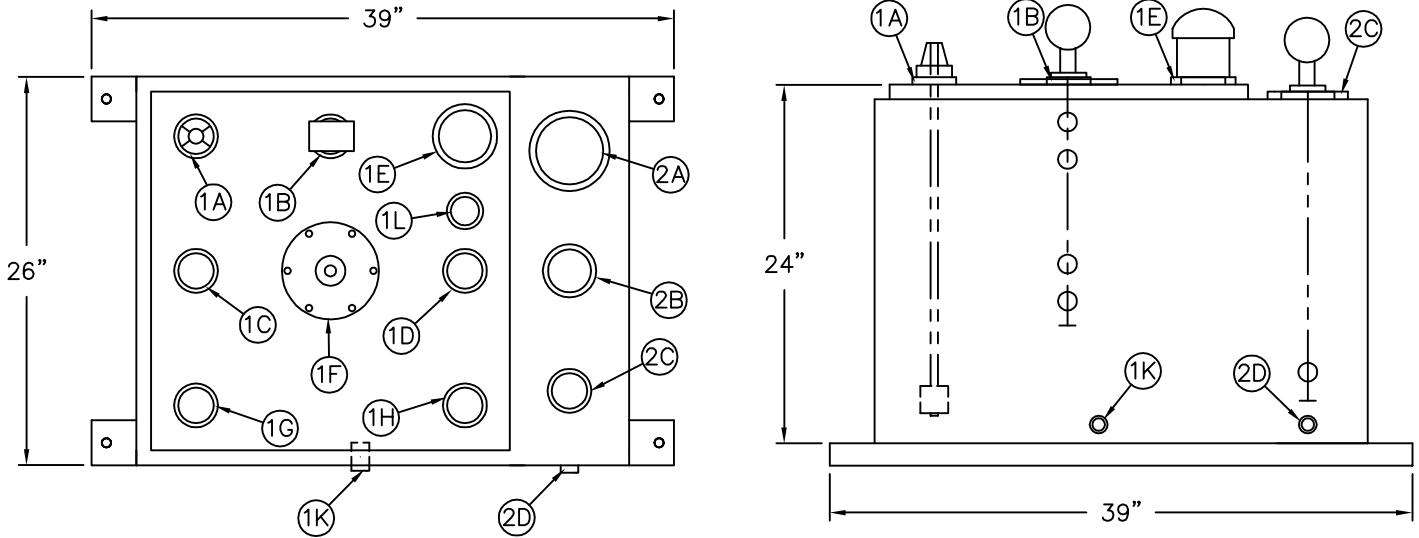


# Model TDW060 Double Wall Day Tank



Double Wall Day Tank is manufactured with carbon steel. The tank and double wall containment vessel are pressure tested and certified to UL 142 standards. The tank is provided with drop tubes on all generator supply and return connections as well as the tank supply and return.

### Day Tank Information:

Capacity (gallons)	60	Estimated weight (lbs)	255
Tank thickness/material	12 GA / C.S		

Item	Connection Description	Size	Item	Connection Description	Size	Item	Connection Description	Size
1A	Tank level gauge*	2"	1F	Inspection port	4-3/4"	2A	Interstitial emergency vent*	4"
1B	Tank level switch*	2"	1G	Generator supply	2"	2B	Interstitial normal vent	2-1/2"
1C	Tank fill	2"	1H	Generator return	2"	2C	Interstitial leak switch	2"
1D	Tank return	2"	1K	Tank drain	1/2"	2D	Interstitial drain	1/2"
1E	Emergency vent*	3"	1L	Normal vent	1-1/2"			

\* System options shown,  
 All connection are NPT.

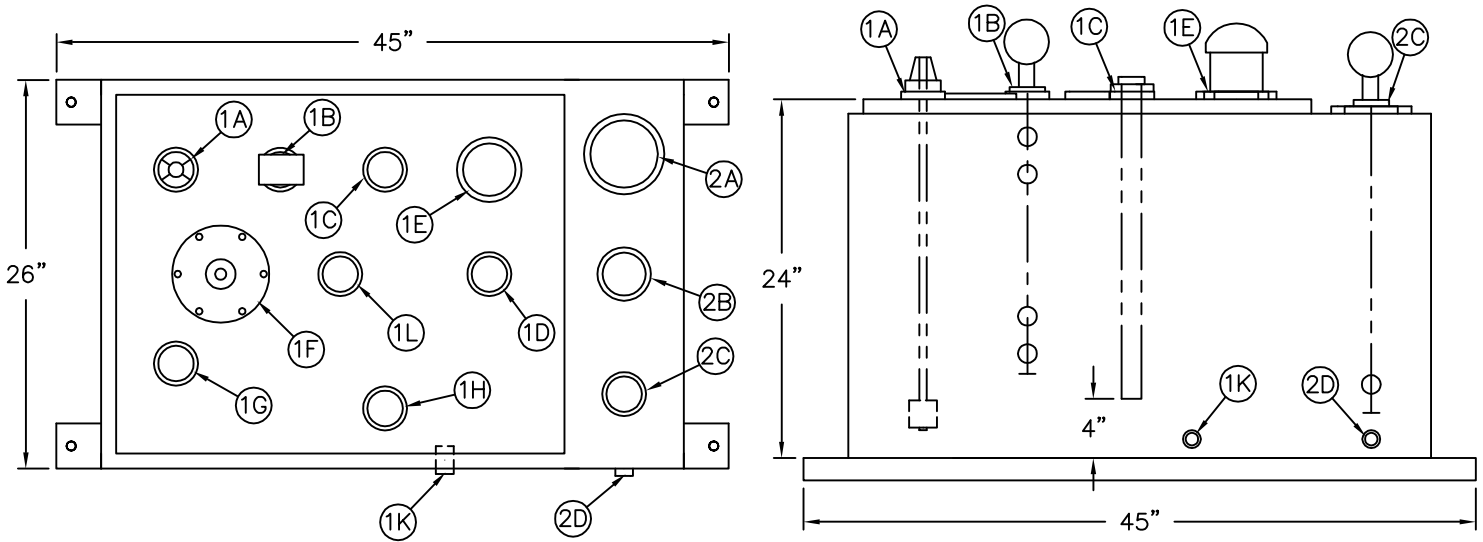
### Standard Equipment

(1) double wall, UL 142 carbon steel day tank, (1) inner tank drain connection with plug, (1) interstitial drain connection with plug, (1) outlet drop tube

### System Options: Check all that apply

Tank level gauge		2" Manual fill port with lockable valve	
Ultrasonic level transmitter		2" Vent cap	
Temperature switch		4" Emergency vent cap	
Temperature transmitter		Return/overflow pump mounted on top of tank	
4 position level switch (pump on/off, hi/low alarm)		Local alarm panel, NEMA #4, mounted/wired **requires level switches	
5 position level switch (pump on/off, hi / low / low-low alarm)		Additional tank connections (specify quantity/size)	
Vent overflow sensing switch			
Additional 1" output drop tubes (each)			
Outlet foot valve 1"			

# Model TDW075 Double Wall Day Tank



Double Wall Day Tank is manufactured with carbon steel. The tank and double wall containment vessel are pressure tested and certified to UL 142 standards. The tank is provided with drop tubes on all generator supply and return connections as well as the tank supply and return.

### Day Tank Information:

Capacity (gallons)	75	Estimated weight (lbs)	295
Tank thickness/material	12 GA / C.S		

Item	Connection Description	Size	Item	Connection Description	Size	Item	Connection Description	Size
1A	Tank level gauge*	2"	1F	Inspection port	4-3/4"	2A	Interstitial emergency vent*	4"
1B	Tank level switch*	2"	1G	Generator supply	2"	2B	Interstitial normal vent	2-1/2"
1C	Tank fill*	2"	1H	Generator return	2"	2C	Interstitial leak switch	2"
1D	Tank return	2"	1K	Tank drain	1/2"	2D	Interstitial drain	1/2"
1E	Emergency vent*	3"	1L	Normal vent	2"			

\* System options shown,  
 All connection are NPT.

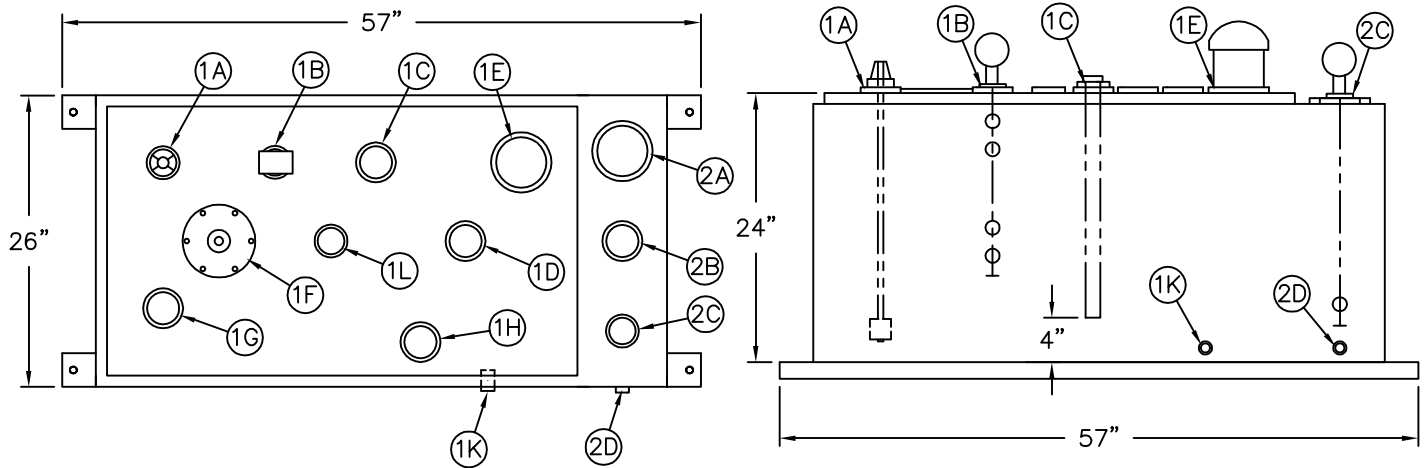
### Standard Equipment

(1) double wall, UL 142 carbon steel day tank, (1) inner tank drain connection with plug, (1) interstitial drain connection with plug, (1) outlet drop tube

### System Options: Check all that apply

Tank level gauge		2" Manual fill port with lockable valve	
Ultrasonic level transmitter		2" Vent cap	
Temperature switch		4" Emergency vent cap	
Temperature transmitter		Return/overflow pump mounted on top of tank	
4 position level switch (pump on/off, hi/low alarm)		Local alarm panel, NEMA #4, mounted/wired **requires level switches	
5 position level switch (pump on/off, hi / low / low-low alarm)		Additional tank connections (specify quantity/size)	
Vent overflow sensing switch			
Additional 1" output drop tubes (each)			
Outlet foot valve 1"			

# Model TDW100 Double Wall Day Tank



Double Wall Day Tank is manufactured with carbon steel. The tank and double wall containment vessel are pressure tested and certified to UL 142 standards. The tank is provided with drop tubes on all generator supply and return connections as well as the tank supply and return.

### Day Tank Information:

Capacity (gallons)	100	Estimated weight (lbs)	375
Tank thickness/material	10 GA / C.S		

Item	Connection Description	Size	Item	Connection Description	Size	Item	Connection Description	Size
1A	Tank level gauge*	2"	1F	Inspection port	4-3/4"	2A	Interstitial emergency vent*	4"
1B	Tank level switch*	2"	1G	Generator supply	2-1/2"	2B	Interstitial normal vent	2-1/2"
1C	Tank fill*	2-1/2"	1H	Generator return	2-1/2"	2C	Interstitial leak switch	2"
1D	Tank return	2-1/2"	1K	Tank drain	1/2"	2D	Interstitial drain	1/2"
1E	Emergency vent*	4"	1L	Normal vent	2"			

\* System options shown,  
 All connection are NPT.

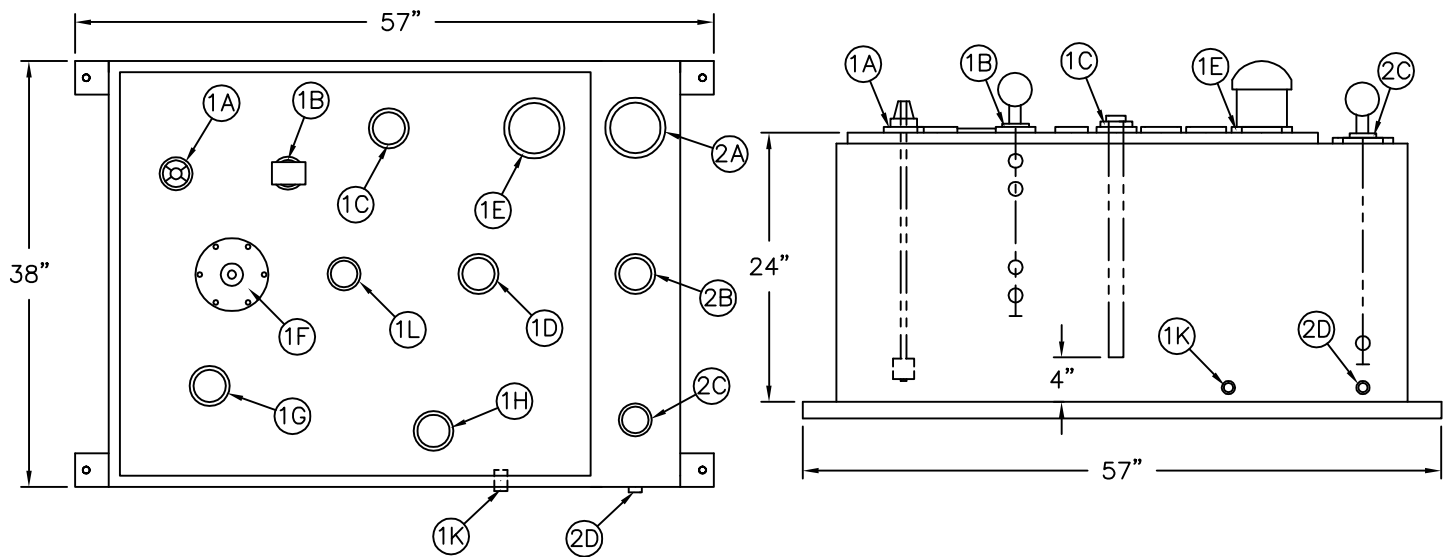
### Standard Equipment

(1) double wall, UL 142 carbon steel day tank, (1) inner tank drain connection with plug, (1) interstitial drain connection with plug, (1) outlet drop tube

### System Options: Check all that apply

Tank level gauge		2" Manual fill port with lockable valve	
Ultrasonic level transmitter		2" Vent cap	
Temperature switch		4" Emergency vent cap	
Temperature transmitter		Return/overflow pump mounted on top of tank	
4 position level switch (pump on/off, hi/low alarm)		Local alarm panel, NEMA #4, mounted/wired **requires level switches	
5 position level switch (pump on/off, hi / low / low-low alarm)		Additional tank connections (specify quantity/size)	
Vent overflow sensing switch			
Additional 1" output drop tubes (each)			
Outlet foot valve 1"			

# Model TDW150 Double Wall Day Tank



Double Wall Day Tank is manufactured with carbon steel. The tank and double wall containment vessel are pressure tested and certified to UL 142 standards. The tank is provided with drop tubes on all generator supply and return connections as well as the tank supply and return.

### Day Tank Information:

Capacity (gallons)	150	Estimated weight (lbs)	500
Tank thickness/material	10 GA / C.S		

Item	Connection Description	Size	Item	Connection Description	Size	Item	Connection Description	Size
1A	Tank level gauge*	2"	1F	Inspection port	4-3/4"	2A	Interstitial emergency vent*	4"
1B	Tank level switch*	2"	1G	Generator supply	2-1/2"	2B	Interstitial normal vent	2-1/2"
1C	Tank fill*	2-1/2"	1H	Generator return	2-1/2"	2C	Interstitial leak switch	2"
1D	Tank return	2-1/2"	1K	Tank drain	1/2"	2D	Interstitial drain	1/2"
1E	Emergency vent*	4"	1L	Normal vent	2"			

\* System options shown,  
 All connection are NPT.

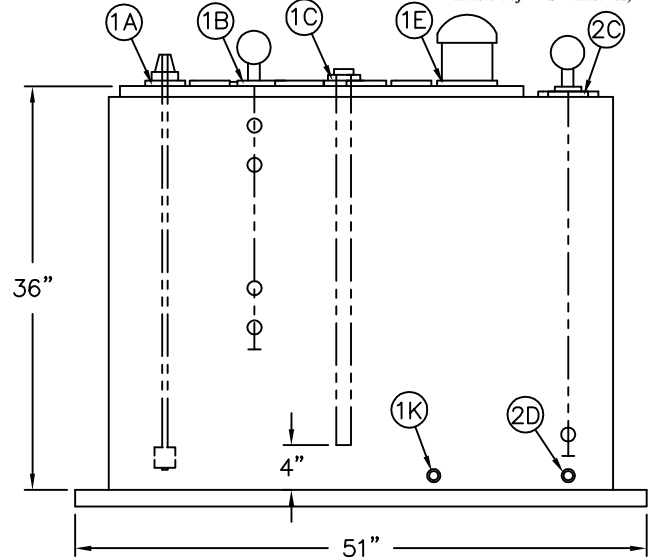
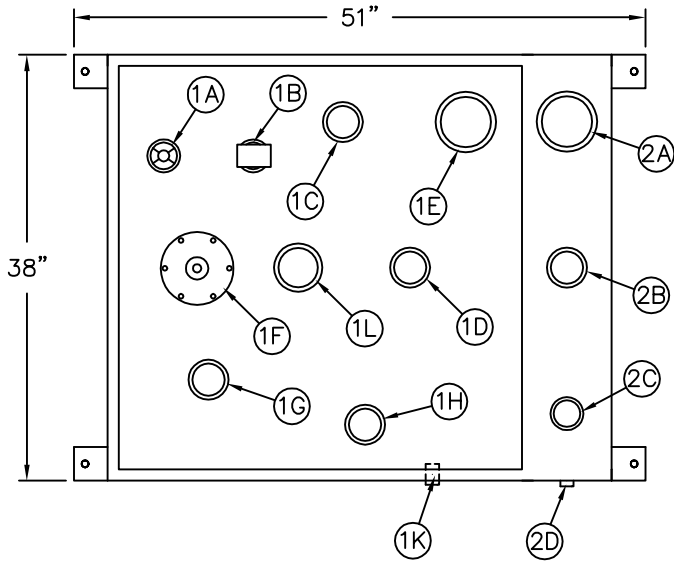
### Standard Equipment

(1) double wall, UL 142 carbon steel day tank, (1) inner tank drain connection with plug, (1) interstitial drain connection with plug, (1) outlet drop tube

### System Options: Check all that apply

Tank level gauge		2" Manual fill port with lockable valve	
Ultrasonic level transmitter		2" Vent cap	
Temperature switch		4" Emergency vent cap	
Temperature transmitter		Return/overflow pump mounted on top of tank	
4 position level switch (pump on/off, hi/low alarm)		Local alarm panel, NEMA #4, mounted/wired **requires level switches	
5 position level switch (pump on/off, hi / low / low-low alarm)		Additional tank connections (specify quantity/size)	
Vent overflow sensing switch			
Additional 1" output drop tubes (each)			
Outlet foot valve 1"			

# Model TDW200 Double Wall Day Tank



Double Wall Day Tank is manufactured with carbon steel. The tank and double wall containment vessel are pressure tested and certified to UL 142 standards. The tank is provided with drop tubes on all generator supply and return connections as well as the tank supply and return.

### Day Tank Information:

Capacity (gallons)	200	Estimated weight (lbs)	570
Tank thickness/material	12 GA / C.S		

Item	Connection Description	Size	Item	Connection Description	Size	Item	Connection Description	Size
1A	Tank level gauge*	2"	1F	Inspection port	4-3/4"	2A	Interstitial emergency vent*	4"
1B	Tank level switch*	2"	1G	Generator supply	2-1/2"	2B	Interstitial normal vent	2-1/2"
1C	Tank fill*	2-1/2"	1H	Generator return	2-1/2"	2C	Interstitial leak switch	2"
1D	Tank return	2-1/2"	1K	Tank drain	1/2"	2D	Interstitial drain	1/2"
1E	Emergency vent*	4"	1L	Normal vent	3"			

\* System options shown,  
 All connection are NPT.

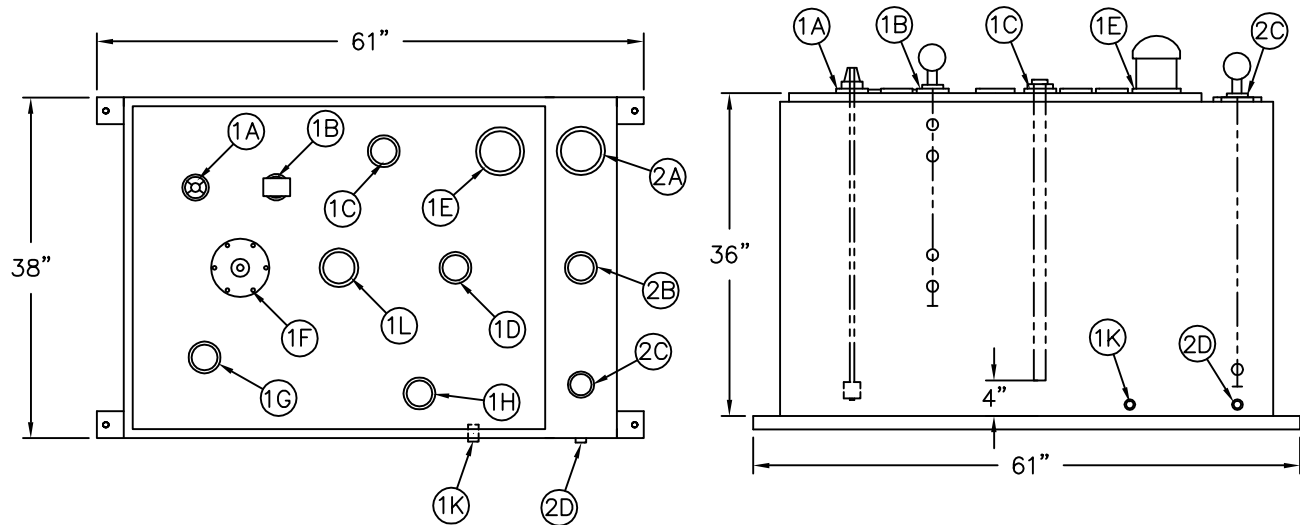
### Standard Equipment

(1) double wall, UL 142 carbon steel day tank, (1) inner tank drain connection with plug, (1) interstitial drain connection with plug, (1) outlet drop tube

### System Options: Check all that apply

Tank level gauge		2" Manual fill port with lockable valve	
Ultrasonic level transmitter		2" Vent cap	
Temperature switch		4" Emergency vent cap	
Temperature transmitter		Return/overflow pump mounted on top of tank	
4 position level switch (pump on/off, hi/low alarm)		Local alarm panel, NEMA #4, mounted/wired **requires level switches	
5 position level switch (pump on/off, hi / low / low-low alarm)		Additional tank connections (specify quantity/size)	
Vent overflow sensing switch			
Additional 1" output drop tubes (each)			
Outlet foot valve 1"			

# Model TDW250 Double Wall Day Tank



Double Wall Day Tank is manufactured with carbon steel. The tank and double wall containment vessel are pressure tested and certified to UL 142 standards. The tank is provided with drop tubes on all generator supply and return connections as well as the tank supply and return.

### Day Tank Information:

Capacity (gallons)	250	Estimated weight (lbs)	670
Tank thickness/material	12 GA / C.S		

Item	Connection Description	Size	Item	Connection Description	Size	Item	Connection Description	Size
1A	Tank level gauge*	2"	1F	Inspection port	4-3/4"	2A	Interstitial emergency vent*	4"
1B	Tank level switch*	2"	1G	Generator supply	2-1/2"	2B	Interstitial normal vent	2-1/2"
1C	Tank fill*	2-1/2"	1H	Generator return	2-1/2"	2C	Interstitial leak switch	2"
1D	Tank return	2-1/2"	1K	Tank drain	1/2"	2D	Interstitial drain	1/2"
1E	Emergency vent*	4"	1L	Normal vent	3"			

\* System options shown,  
 All connection are NPT.

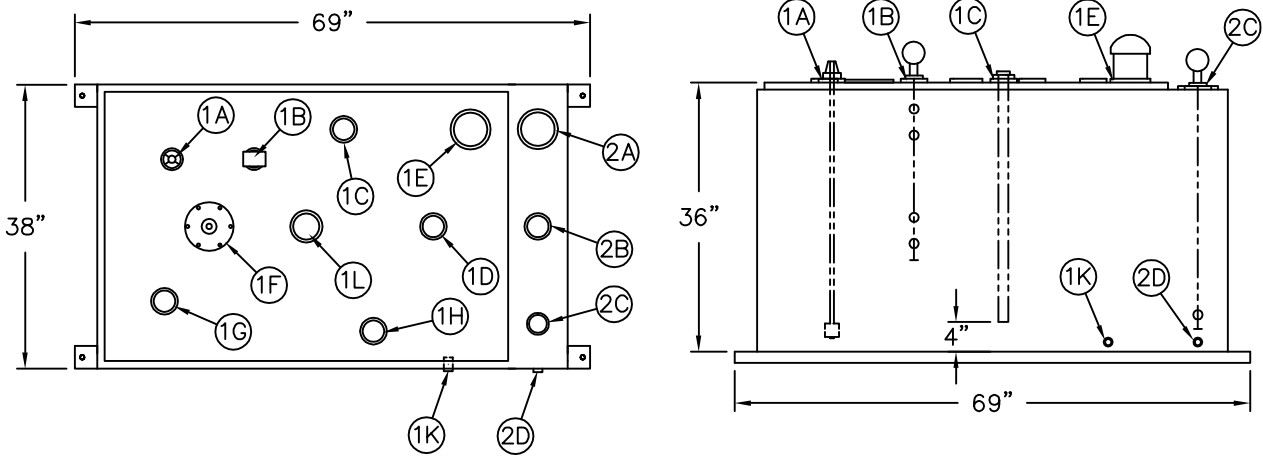
### Standard Equipment

(1) double wall, UL 142 carbon steel day tank, (1) inner tank drain connection with plug, (1) interstitial drain connection with plug, (1) outlet drop tube

### System Options: Check all that apply

Tank level gauge		2" Manual fill port with lockable valve	
Ultrasonic level transmitter		2" Vent cap	
Temperature switch		4" Emergency vent cap	
Temperature transmitter		Return/overflow pump mounted on top of tank	
4 position level switch (pump on/off, hi/low alarm)		Local alarm panel, NEMA #4, mounted/wired **requires level switches	
5 position level switch (pump on/off, hi / low / low-low alarm)		Additional tank connections (specify quantity/size)	
Vent overflow sensing switch			
Additional 1" output drop tubes (each)			
Outlet foot valve 1"			

# Model TDW300 Double Wall Day Tank



Double Wall Day Tank is manufactured with carbon steel. The tank and double wall containment vessel are pressure tested and certified to UL 142 standards. The tank is provided with drop tubes on all generator supply and return connections as well as the tank supply and return.

### Day Tank Information:

Capacity (gallons)	300	Estimated weight (lbs)	750
Tank thickness/material	10 GA / C.S		

Item	Connection Description	Size	Item	Connection Description	Size	Item	Connection Description	Size
1A	Tank level gauge*	2"	1F	Inspection port	4-3/4"	2A	Interstitial emergency vent*	4"
1B	Tank level switch*	2"	1G	Generator supply	2-1/2"	2B	Interstitial normal vent	2-1/2"
1C	Tank fill*	2-1/2"	1H	Generator return	2-1/2"	2C	Interstitial leak switch	2"
1D	Tank return	2-1/2"	1K	Tank drain	1/2"	2D	Interstitial drain	1/2"
1E	Emergency vent*	4"	1L	Normal vent	3"			

\* System options shown,  
 All connection are NPT.

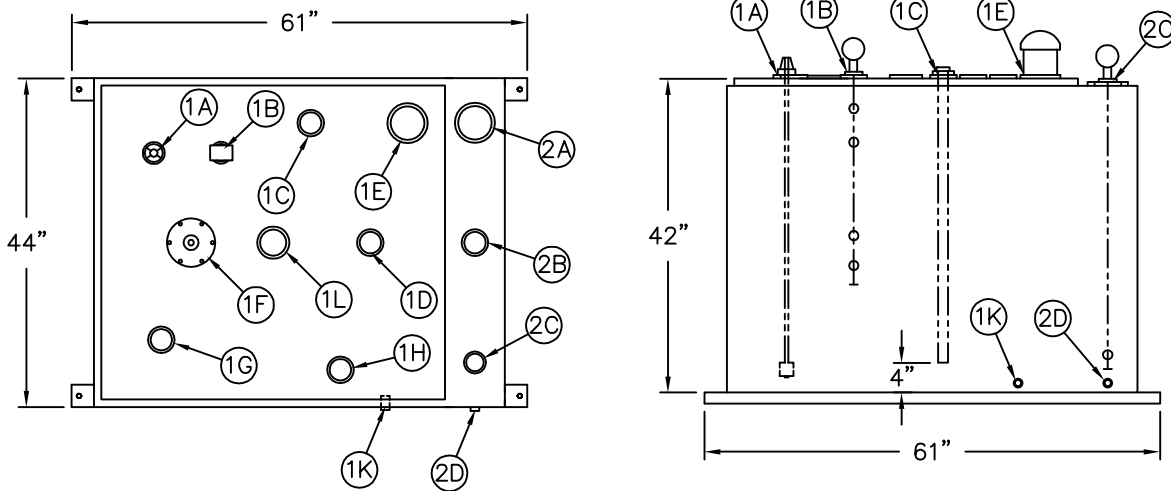
### Standard Equipment

(1) double wall, UL 142 carbon steel day tank, (1) inner tank drain connection with plug, (1) interstitial drain connection with plug, (1) outlet drop tube

### System Options: Check all that apply

Tank level gauge		2" Manual fill port with lockable valve	
Ultrasonic level transmitter		2" Vent cap	
Temperature switch		4" Emergency vent cap	
Temperature transmitter		Return/overflow pump mounted on top of tank	
4 position level switch (pump on/off, hi/low alarm)		Local alarm panel, NEMA #4, mounted/wired **requires level switches	
5 position level switch (pump on/off, hi / low / low-low alarm)		Additional tank connections (specify quantity/size)	
Vent overflow sensing switch			
Additional 1" output drop tubes (each)			
Outlet foot valve 1"			

# Model TDW350 Double Wall Day Tank



Double Wall Day Tank is manufactured with carbon steel. The tank and double wall containment vessel are pressure tested and certified to UL 142 standards. The tank is provided with drop tubes on all generator supply and return connections as well as the tank supply and return.

### Day Tank Information:

Capacity (gallons)	350	Estimated weight (lbs)	830
Tank thickness/material	10 GA / C.S		

Item	Connection Description	Size	Item	Connection Description	Size	Item	Connection Description	Size
1A	Tank level gauge*	2"	1F	Inspection port	4-3/4"	2A	Interstitial emergency vent*	4"
1B	Tank level switch*	2"	1G	Generator supply	2-1/2"	2B	Interstitial normal vent	2-1/2"
1C	Tank fill*	2-1/2"	1H	Generator return	2-1/2"	2C	Interstitial leak switch	2"
1D	Tank return	2-1/2"	1K	Tank drain	1/2"	2D	Interstitial drain	1/2"
1E	Emergency vent*	4"	1L	Normal vent	3"			

\* System options shown,  
 All connection are NPT.

### Standard Equipment

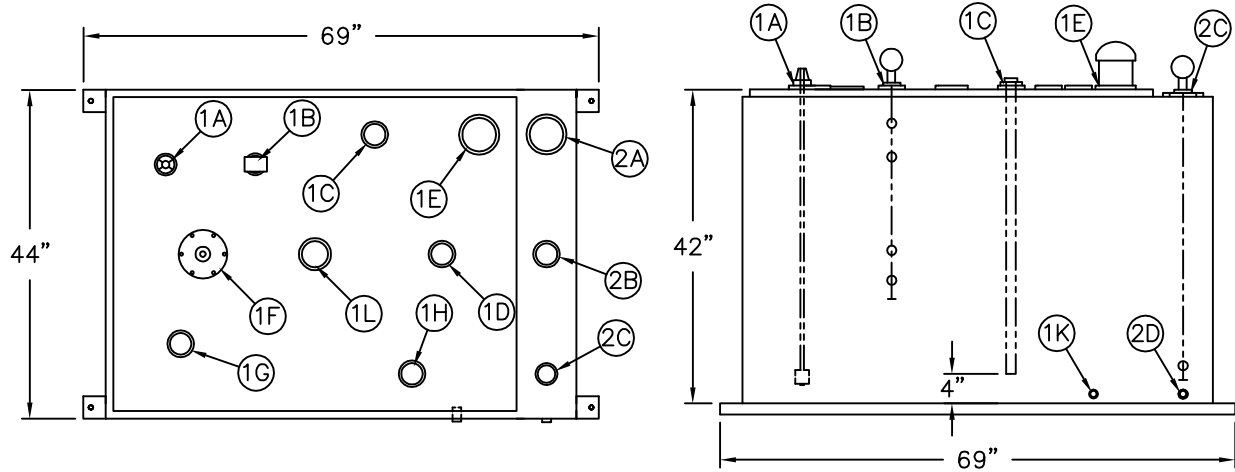
(1) double wall, UL 142 carbon steel day tank, (1) inner tank drain connection with plug, (1) interstitial drain connection with plug, (1) outlet drop tube

### System Options: Check all that apply

Tank level gauge		2" Manual fill port with lockable valve	
Ultrasonic level transmitter		2" Vent cap	
Temperature switch		4" Emergency vent cap	
Temperature transmitter		Return/overflow pump mounted on top of tank	
4 position level switch (pump on/off, hi/low alarm)		Local alarm panel, NEMA #4, mounted/wired **requires level switches	
5 position level switch (pump on/off, hi / low / low-low alarm)		Additional tank connections (specify quantity/size)	
Vent overflow sensing switch			
Additional 1" output drop tubes (each)			
Outlet foot valve 1"			



# Model TDW400 Double Wall Day Tank



Double Wall Day Tank is manufactured with carbon steel. The tank and double wall containment vessel are pressure tested and certified to UL 142 standards. The tank is provided with drop tubes on all generator supply and return connections as well as the tank supply and return.

### Day Tank Information:

Capacity (gallons)	400	Estimated weight (lbs)	930
Tank thickness/material	10 GA / C.S		

Item	Connection Description	Size	Item	Connection Description	Size	Item	Connection Description	Size
1A	Tank level gauge*	2"	1F	Inspection port	4-3/4"	2A	Interstitial emergency vent*	4"
1B	Tank level switch*	2"	1G	Generator supply	2-1/2"	2B	Interstitial normal vent	2-1/2"
1C	Tank fill*	2-1/2"	1H	Generator return	2-1/2"	2C	Interstitial leak switch	2"
1D	Tank return	2-1/2"	1K	Tank drain	1/2"	2D	Interstitial drain	1/2"
1E	Emergency vent*	4"	1L	Normal vent	3"			

\* System options shown,  
 All connection are NPT.

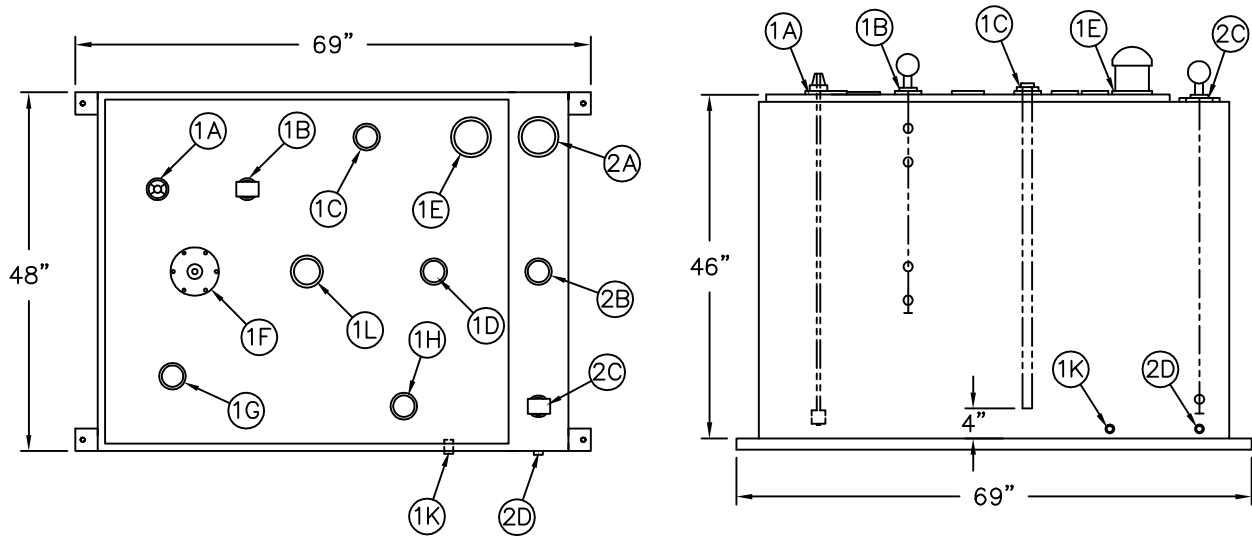
### Standard Equipment

(1) double wall, UL 142 carbon steel day tank, (1) inner tank drain connection with plug, (1) interstitial drain connection with plug, (1) outlet drop tube

### System Options: Check all that apply

Tank level gauge		2" Manual fill port with lockable valve	
Ultrasonic level transmitter		2" Vent cap	
Temperature switch		4" Emergency vent cap	
Temperature transmitter		Return/overflow pump mounted on top of tank	
4 position level switch (pump on/off, hi/low alarm)		Local alarm panel, NEMA #4, mounted/wired **requires level switches	
5 position level switch (pump on/off, hi / low / low-low alarm)		Additional tank connections (specify quantity/size)	
Vent overflow sensing switch			
Additional 1" output drop tubes (each)			
Outlet foot valve 1"			

# Model TDW500 Double Wall Day Tank



Double Wall Day Tank is manufactured with carbon steel. The tank and double wall containment vessel are pressure tested and certified to UL 142 standards. The tank is provided with drop tubes on all generator supply and return connections as well as the tank supply and return.

### Day Tank Information:

Capacity (gallons)	500	Estimated weight (lbs)	1060
Tank thickness/material	10 GA / C.S		

Item	Connection Description	Size	Item	Connection Description	Size	Item	Connection Description	Size
1A	Tank level gauge*	2"	1F	Inspection port	4-3/4"	2A	Interstitial emergency vent*	4"
1B	Tank level switch*	2"	1G	Generator supply	2-1/2"	2B	Interstitial normal vent	2-1/2"
1C	Tank fill*	2-1/2"	1H	Generator return	2-1/2"	2C	Interstitial leak switch	2"
1D	Tank return	2-1/2"	1K	Tank drain	1/2"	2D	Interstitial drain	1/2"
1E	Emergency vent*	4"	1L	Normal vent	3"			

\* System options shown,  
 All connection are NPT.

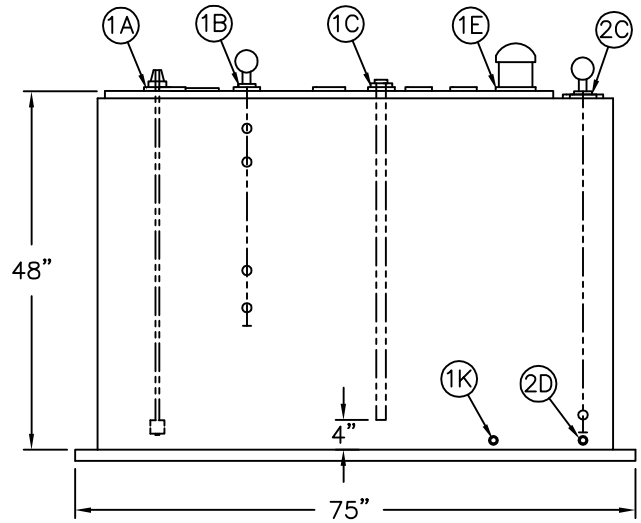
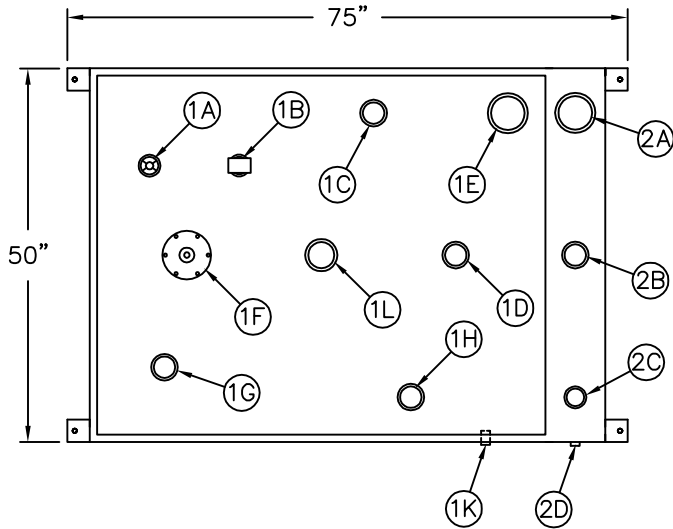
### Standard Equipment

(1) double wall, UL 142 carbon steel day tank, (1) inner tank drain connection with plug, (1) interstitial drain connection with plug, (1) outlet drop tube

### System Options: Check all that apply

Tank level gauge		2" Manual fill port with lockable valve	
Ultrasonic level transmitter		2" Vent cap	
Temperature switch		4" Emergency vent cap	
Temperature transmitter		Return/overflow pump mounted on top of tank	
4 position level switch (pump on/off, hi/low alarm)		Local alarm panel, NEMA #4, mounted/wired **requires level switches	
5 position level switch (pump on/off, hi / low / low-low alarm)		Additional tank connections (specify quantity/size)	
Vent overflow sensing switch			
Additional 1" output drop tubes (each)			
Outlet foot valve 1"			

# Model TDW600 Double Wall Day Tank



Double Wall Day Tank is manufactured with carbon steel. The tank and double wall containment vessel are pressure tested and certified to UL 142 standards. The tank is provided with drop tubes on all generator supply and return connections as well as the tank supply and return.

### Day Tank Information:

Capacity (gallons)	600	Estimated weight (lbs)	1180
Tank thickness/material	10 GA / C.S		

Item	Connection Description	Size	Item	Connection Description	Size	Item	Connection Description	Size
1A	Tank level gauge*	2"	1F	Inspection port	4-3/4"	2A	Interstitial emergency vent*	4"
1B	Tank level switch*	2"	1G	Generator supply	2-1/2"	2B	Interstitial normal vent	2-1/2"
1C	Tank fill*	2-1/2"	1H	Generator return	2-1/2"	2C	Interstitial leak switch	2"
1D	Tank return	2-1/2"	1K	Tank drain	1/2"	2D	Interstitial drain	1/2"
1E	Emergency vent*	4"	1L	Normal vent	3"			

\* System options shown,  
 All connection are NPT.

### Standard Equipment

(1) double wall, UL 142 carbon steel day tank, (1) inner tank drain connection with plug, (1) interstitial drain connection with plug, (1) outlet drop tube

### System Options: Check all that apply

Tank level gauge		2" Manual fill port with lockable valve	
Ultrasonic level transmitter		2" Vent cap	
Temperature switch		4" Emergency vent cap	
Temperature transmitter		Return/overflow pump mounted on top of tank	
4 position level switch (pump on/off, hi/low alarm)		Local alarm panel, NEMA #4, mounted/wired **requires level switches	
5 position level switch (pump on/off, hi / low / low-low alarm)		Additional tank connections (specify quantity/size)	
Vent overflow sensing switch			
Additional 1" output drop tubes (each)			
Outlet foot valve 1"			